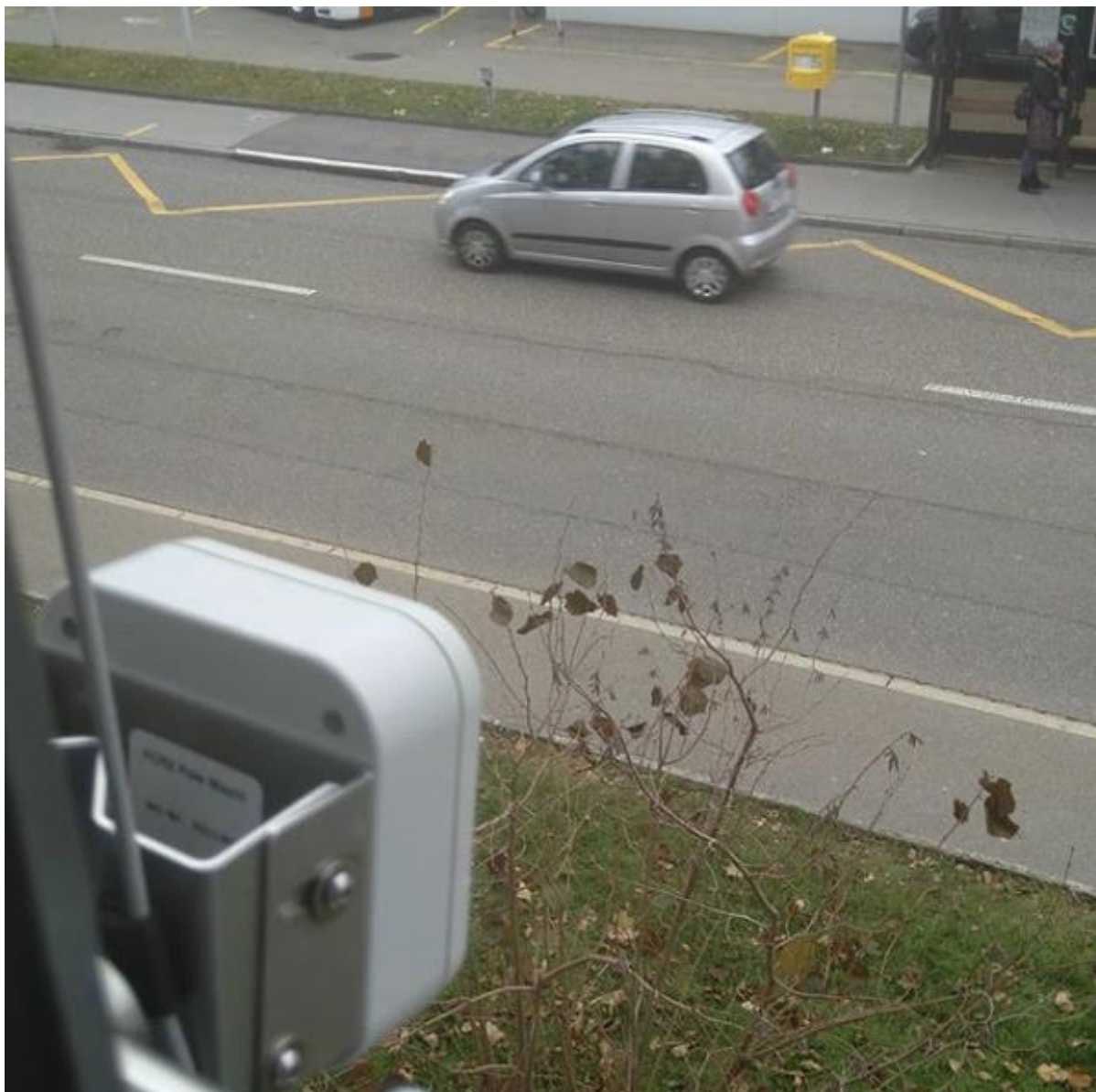


# QUICKSTART GUIDE

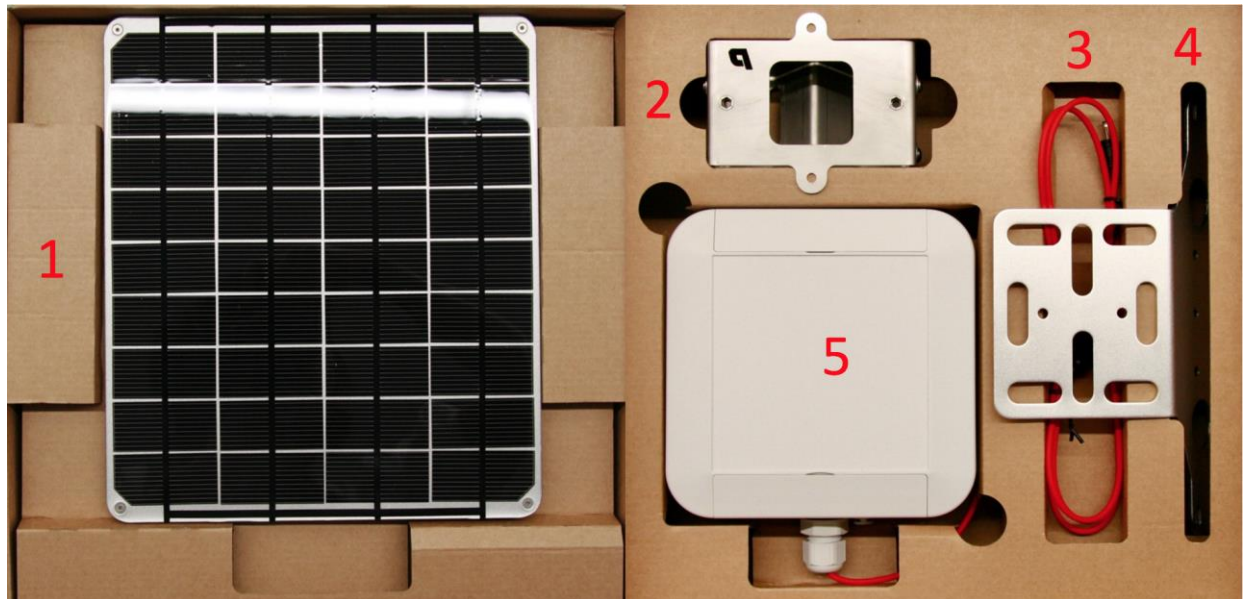
LoRaWAN™ Radar Traffic Counter Solar-Powered

- TCR-EU868-S
- TCR-US915-S
- TCR-AU915-S
- TCR-AS923-S



## What is in the box

Please check for the following content in your box.



1. Solar Panel 18V
2. MT40 Pole Mount (optional)
3. Extension Cable
4. Solar Panel Bracket
5. TCR-S

## Setup

You can open the device to access the USB configuration port to change device settings.



- Remove the four screws from the casing to gain access to the device.
- Carefully open the enclosure while making sure not to yank the cables connecting the two electronic parts in the top and the bottom of the casing.



- Connect the sensor to your Computer with a USB Cable using the Config Port.
- Download Parametric Device Explorer from <https://www.parametric.ch/downloads/>



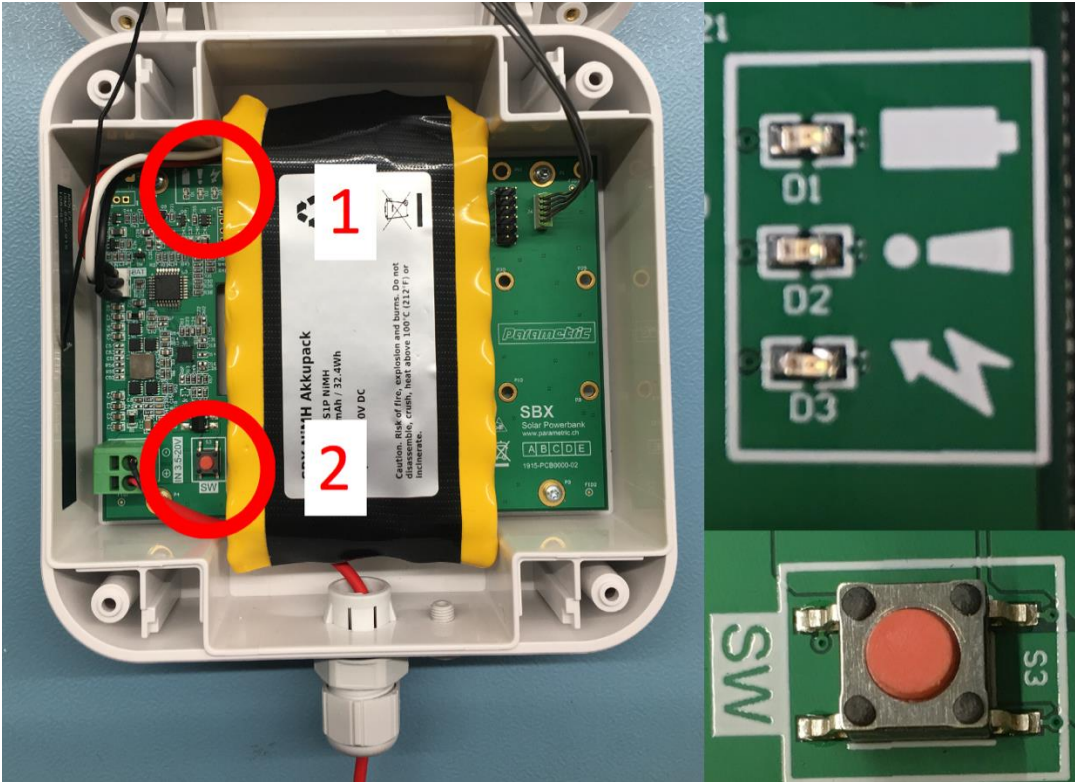
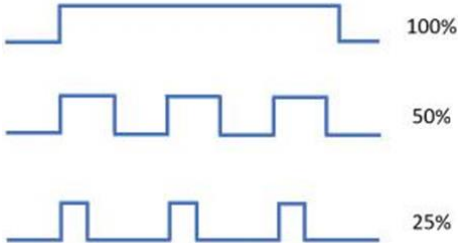
# SBX Solar Charger

TCR-S device are equipped with SBX MPTT Solar Chargers and high-quality NiMH Battery Packs. You can check the status of the battery by pushing the switch (2).

Status is indicated by 3 LEDs (1)

- Battery LED indicates battery capacity 0-100% (PWM)
- Error LED indicates device errors
- Charge LED indicates solar power 0-100% (PWM)

## Pulse-wide-modulation (PWM) indication



## Installation

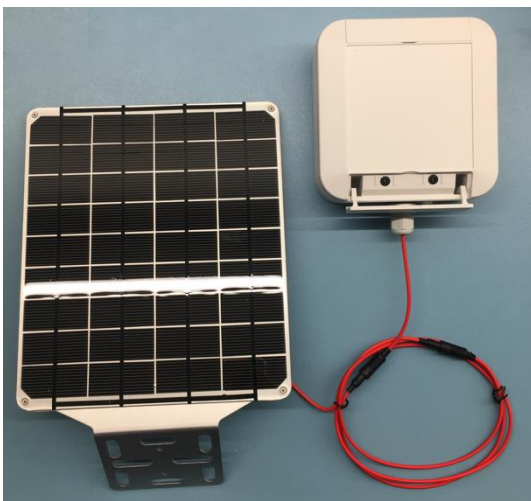


- TCR-S are shipped with a disconnected battery for safety reasons.

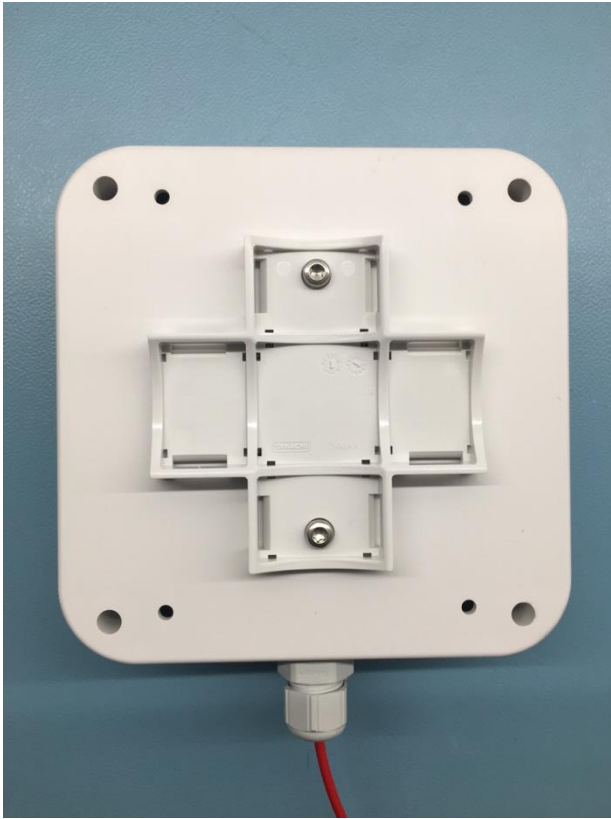
Connect the battery pack cable to the circuit board. Battery LED should blink 3 times.



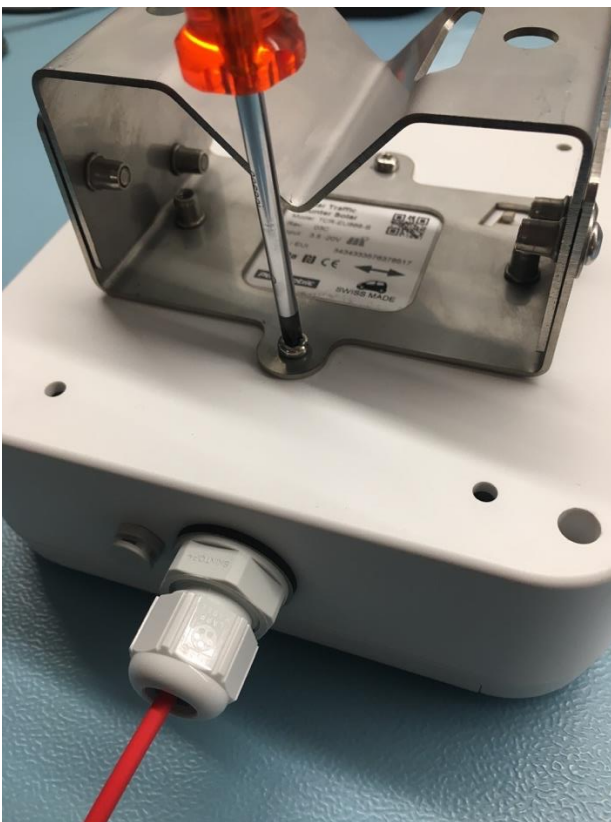
- Fix the solar panel bracket to the back of the solar panel



- Connect the solar panel to the solar panel extension cable and the extension cable to the sensor.
- You will hear a « click » when the cables are connected securely
- Ensure that the cable gland is fully tightened



- WPMB Universal Mounting Bracket can be attached with 2 screws.

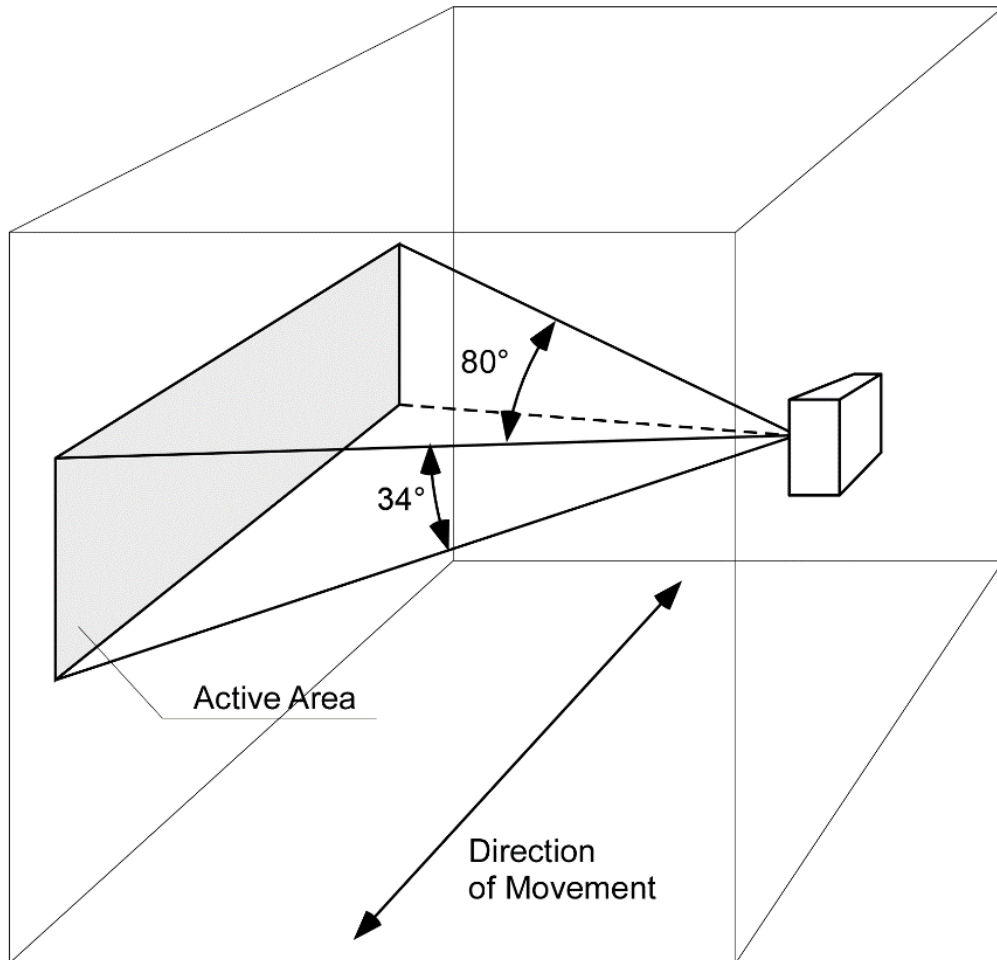


- Optional MT40 tiltable pole mount needs to be attached to the TCR-S.

## Optimal Placement

TCR-S are 1D sensors measuring Traffic along a virtual line.

The device can be directed horizontal or with a tilt up to  $-40^\circ$



## Installation scenarios

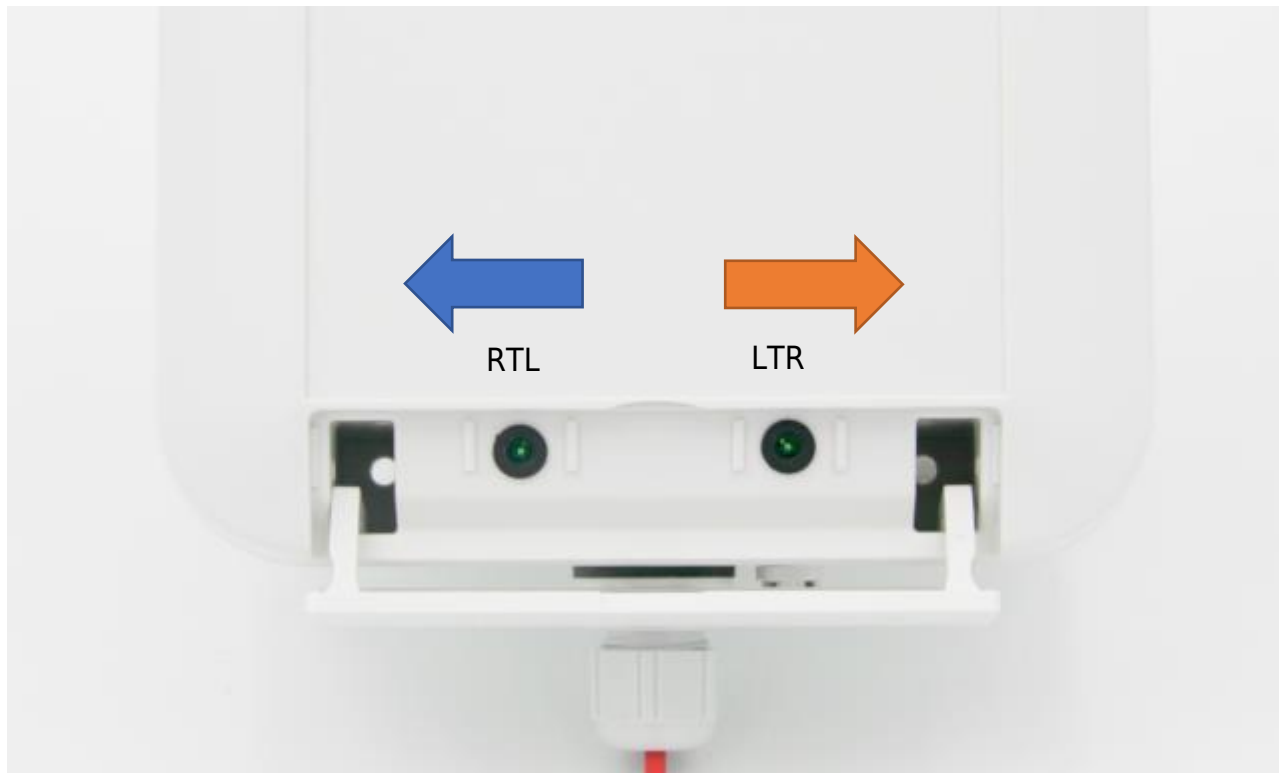
Counting bicycles      Place at saddle height

Counting people:      Place at hips height

Counting cars:      Place at door handle height

## Testing

Counting functionality can be checked by 2 direction leds.



- **RTL LED** blinks when traffic detected from right
- **LTR LED** blinks when traffic detected from left

If both LEDs are blinking, the device is trying to connect to the LPWAN.



Parametric GmbH  
Waldeggstrasse 82  
3800 Interlaken  
Switzerland

[www.parametric.ch](http://www.parametric.ch)